

# Curbs Plus, Inc.

1200 Carline Road  
 Rossville, GA. 30741  
 PH (706) 858-1188 / FAX (706) 866-2339

APPROVED BY: \_\_\_\_\_

DATE APPROVED: \_\_\_\_\_

## CPM-6 (Non-Insulated) (1-Piece) Metal Bldg. Roof Curb

### STANDARD FEATURES

1. 18Ga. Prime Galvalume Steel Construction
2. Corners Mitered and Welded Watertight.
3. Curbs Prime Painted after Fabrication.
4. Water Cricket.
5. 8" Minimum Height.
6. No Insulation.

### OPTIONS:

- 1.
- 2.
- 3.
- 4.

PROJECT NAME: \_\_\_\_\_

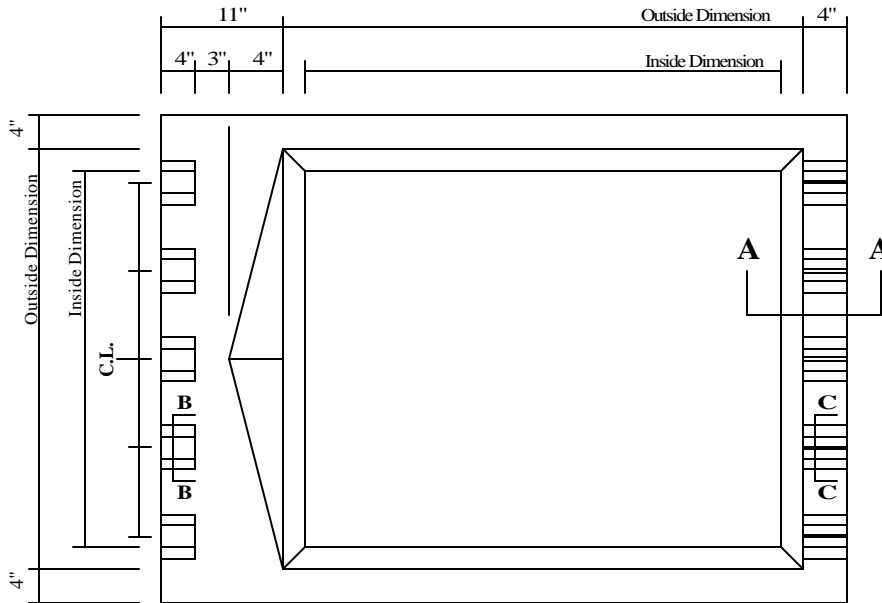
CITY, STATE: \_\_\_\_\_

CUSTOMER: \_\_\_\_\_

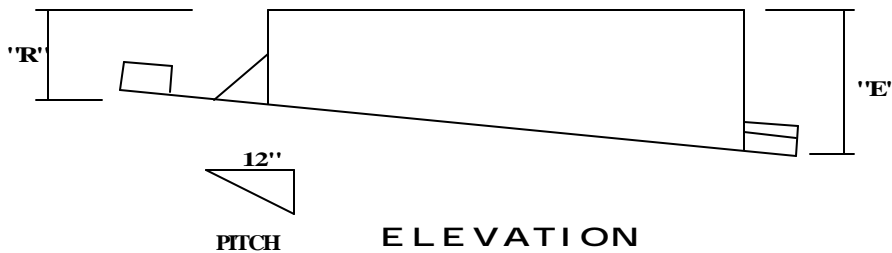
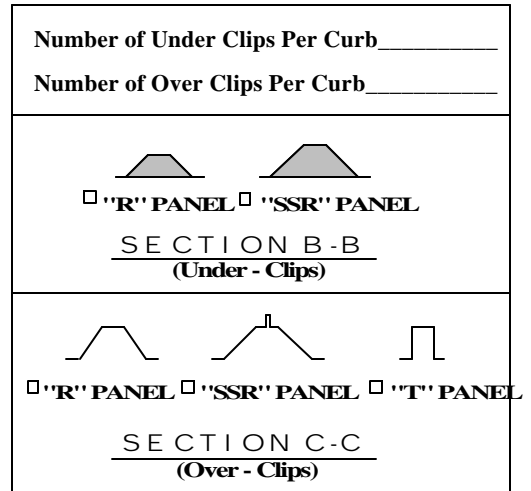
JOB NUMBER: \_\_\_\_\_

**Note: The Front Flange Fits Under the Roof Panel  
 The Rear and Side Flanges Fit Over the Roof Panel**

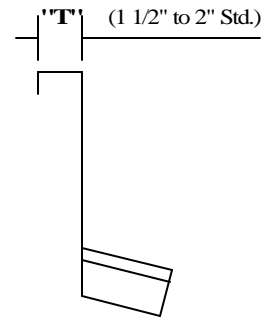
CLIPS TO MATCH THIS ROOF PANEL \_\_\_\_\_



**PLAN VIEW**



**ELEVATION**



**SECTION A-A**

QUANTITY	INSIDE DIMENSION	OUTSIDE DIMENSION	"R"	"E"	"T"	TAG
	x	x				