

Curbs Plus, Inc.

1200 Carline Road
 Rossville, GA. 30741
 PH (706) 858-1188 / FAX (706) 866-2339

APPROVED BY: _____

DATE APPROVED: _____

CPEJ-3 (Insulated) Conventional Roof Expansion Joint

STANDARD FEATURES

1. 20 Ga. Prime Galvanized Steel Construction
2. Fully Welded Watertight One-piece Construction
3. Connector Clips
4. Pressure Treated 2 x 2 Wood Nailers
5. 1-1/2" Thick 3# Density Fiberglass Insulation
6. Internal Angle Reinforcement

OPTIONS:

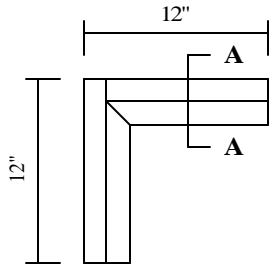
- 1.
- 2.
- 3.
- 4.

PROJECT NAME: _____

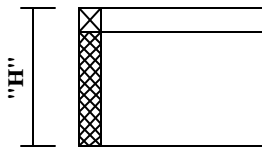
CITY, STATE: _____

CUSTOMER: _____

JOB NUMBER: _____

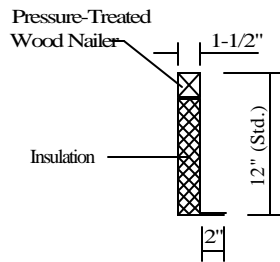


PLAN VIEW

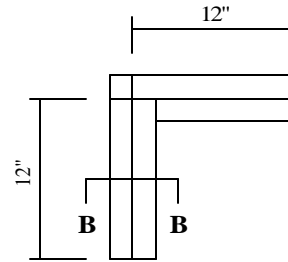


ELEVATION

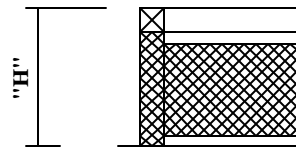
CPEJ-3 (Inside Corner)



SECTION A-A

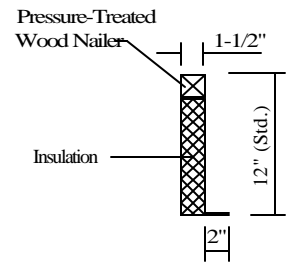


PLAN VIEW

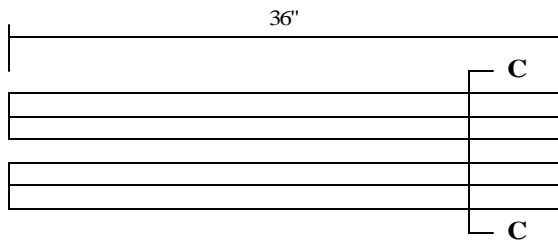


ELEVATION

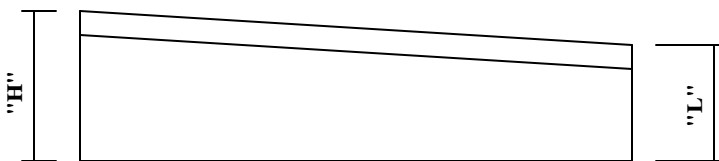
CPEJ-3 (Outside Corner)



SECTION B-B

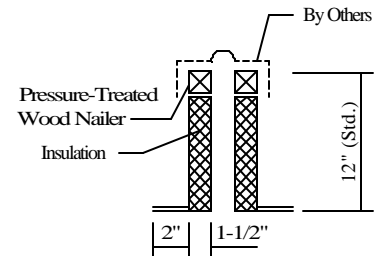


PLAN VIEW



ELEVATION

CPEJ-3 (Sloping End Section)



SECTION C-C

QUANTITY	ITEM	"H"	"L"	TAG