

# Curbs Plus, Inc.

1200 Carline Road  
 Rossville, GA. 30741  
 PH (706) 858-1188 / FAX (706) 866-2339

APPROVED BY: \_\_\_\_\_

DATE APPROVED: \_\_\_\_\_

## CPC-2 (Insulated) Conventional Roof Curb

### STANDARD FEATURES

1. 18 Ga. Prime Galvanized Steel Construction
2. Fully Welded Watertight One-piece Construction
3. Primed Painted after Fabrication
4. Pressure Treated 2 x 2 Wood Nailer
5. 1-1/2" Thick 3# Density Fiberglass Insulation
6. Internal Angle Reinforcement
7. Fully Mitered and Welded 3" Cant

### OPTIONS:

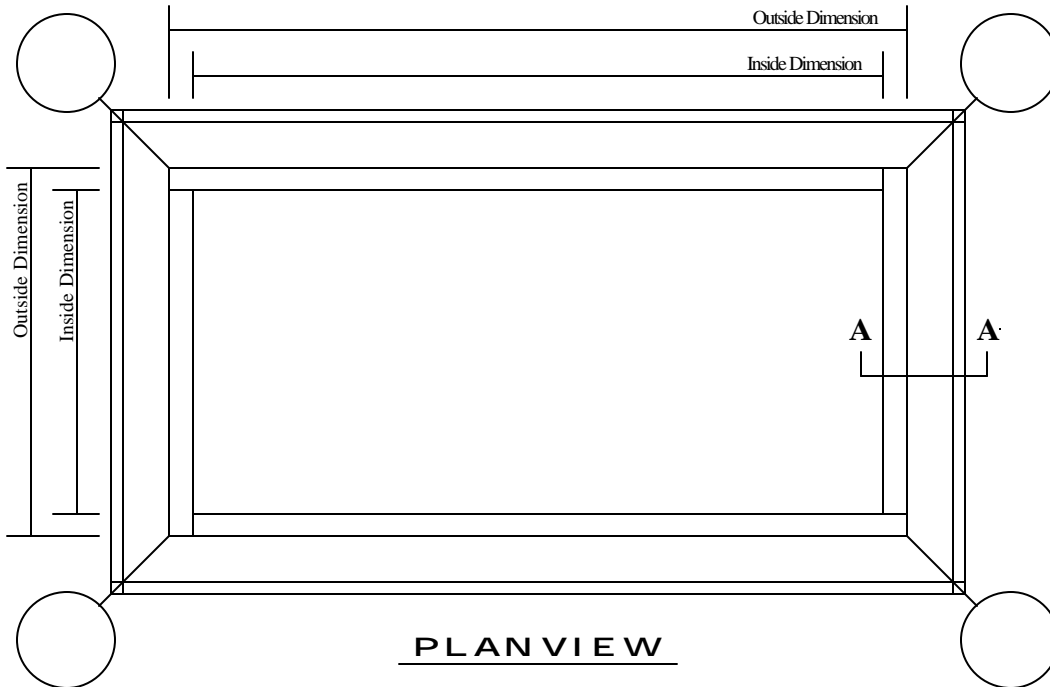
- 1.
- 2.
- 3.
- 4.

PROJECT NAME: \_\_\_\_\_

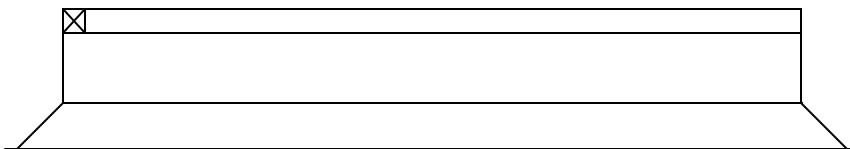
CITY, STATE: \_\_\_\_\_

CUSTOMER: \_\_\_\_\_

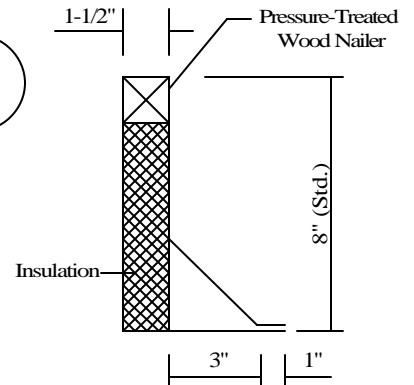
JOB NUMBER: \_\_\_\_\_



PLAN VIEW



ELEVATION



SECTION A-A

QUANTITY	INSIDE DIMENSION	OUTSIDE DIMENSION	HEIGHT	TAG